



125 Main Street, Cedar Falls, IA 50613
Phone: 319-277-2202

4401 Westown Pkwy, Ste 216
West Des Moines, IA 50266
Phone 515-421-4101

Enclosed is a non-refundable deposit in the amount of
\$3,000.00 per person

- CAT **D** - Fixed Window: \$4,295 / pp
160 sq. ft.
- CAT **AB** - French & Outside Balcony: \$5,795/ pp
235 sq. ft.
- CAT **AA**- French & Outside Balcony: \$5,995 / pp
235 sq. ft.
- CAT **AA+** - French & Outside Balcony: \$6,595 / pp
235 sq. ft.
- CAT **SS** - Suite: \$7,295 / pp
350 sq. ft.

**Rates based on double occupancy. Additional stateroom categories available upon request*

AMOUNT ENCLOSED: _____

Final payment is due **February 1, 2019**

Please confirm _____ reservations for:

Full Legal Passport Name(s) and date(s) of birth

NAME _____ DATE OF BIRTH _____

NAME _____ DATE OF BIRTH _____

Address _____

City _____

State _____ ZIP _____

Rotary Club Name/ID _____

Email: _____

Terms & Conditions

DEPOSIT & FINAL PAYMENT: Deposit and final payment are non-refundable. If final payment not received by specified date, we reserve the right to cancel the reservation. In case of billing errors, we reserve the right to re-invoice with correct pricing.

REVISION FEES: Handling fee of \$50.00 per transaction will be charged for any revisions. **Spelling corrections to clients' names after air tickets have been issued are subject to airline revision fees.**

PASSPORTS AND VISAS: A valid passport is required of all tour participants. It must be valid six months after date of return. Non US Citizens must consult with the appropriate consulates to determine if any visas are needed.

TRAVELERS WHO NEED SPECIAL ASSISTANCE: Any condition or disability requiring special attention must be reported to Humble Travel at the time of booking. Humble Travel will make reasonable efforts to accommodate the special needs of disabled tour participants, but is not responsible for any denial of service by carriers, hotels, restaurants, or other independent suppliers.

PRICES: The tour price is per person based on two persons sharing a room and a minimum of 38 tour participants. All prices are based on rates (including foreign exchange rates) known at time of printing and expected to be in effect at time of departure. Prices, including taxes and fees, are subject to change without notice if such rates change prior to departure.

BAGGAGE: Portage for one suitcase on tour is included in price. Airport portage at beginning and end of tour is not included. Due to limited coach capacity, single bags should have dimensions not exceeding 31" x 21" x 11" and weight not exceeding 50 lbs or less

if your air carrier has strict weight/dimensions limitations. Wheeled carry-ons are not allowed on motor coaches.

RESPONSIBILITY: Humble Travel, and AMAWaterways (hereinafter to refer as "the Operators") are responsible to you in making arrangement for tour service offers in this brochure, including transportation, sightseeing and hotel accommodations. The carriers, hotels and other suppliers providing tour service are independent contractors and are not principals, agents, employees, partners or joint ventures of the Operators or its affiliates. The tour participant agrees that neither the Operators or its affiliates shall be liable for any damaged, lost (including personal injury, death and property loss) or expense occasioned by any act of omission of supplier providing tour services, or any insurer or insurance administrator under a travel protection plan, or of any other person. If the services included in the tour cannot be supplied or there are changes itinerary for reasons beyond the control of the Operators, the Operators will arrange for the provision of comparable services, when possible. Any resulting additional expense will be payable by the tour participants and any resulting saving will be refunded by the Operators to tour participant.



125 Main Street, Cedar Falls, IA 50613
Phone: (319) 277-2202 Fax: (319) 266-0974
www.humbletravel.com
Email: travel@humbletravel.com

4401 Westown Pkwy, Ste. 216, West Des Moines, IA 50266
Phone: (515) 421-4101 Fax: (515) 421-4521
www.humbletravel.com
Email: discover@humbletravel.com

Humble Travel

Presents

Captivating Rhine June 6 - 15, 2019 Aboard the AmaPrima



In Support Of Rotary





Included in your package:

- 2 nights accommodation in Amsterdam:
- **Renaissance Amsterdam Hotel (or similar)**
- Sightseeing and transportation per itinerary
- All transfers
- 7 nights luxury accommodation in outside state- room
- All onboard dining in a variety of venues
- Unlimited sparkling wine and fresh juice for breakfast
- Unlimited fine wine, beer, and soft drinks with lunch and dinner
- Sip & Sail Daily Cocktail Hour— complimentary wine, beer, spirits, and soft drinks
- Special interest tours with knowledgeable guides
- Free high-speed internet and WiFi access
- All port taxes

ITINERARY

Day 1 - June 6 (Thurs) - Amsterdam

Transfer from Airport to hotel

Day 2 - June 7 (Fri) - Amsterdam

Excursion

Day 3- June 8 (Sat) – Amsterdam

Depart hotel to the port for embarkation aboard the AmaKristina. (B,D)

Day 4 – June 9 (Sun)– Amsterdam

Welcome to your first morning on the AmaKristina! Get acquainted with Amsterdam on a scenic canal cruise and city tour. (B,L,D)

Day 5 – June 10 (Mon) – Cologne, Germany

Today in Cologne, you'll have the option to enjoy a guided walking tour and **Cologne Cathedral** visit, bike ride through the city, or experience Kolsch beer tasting at a local tavern. (B,L,D)

Day 6 – June 11 (Tue) – Rhine Gorge, Rudesheim

The day will begin with scenic cruising through the Rhine Gorge. In **Rudesheim**, you will have the choice of a wine tasting excursion, a Gondola ride, a Reingau bike tour, a visit to **Siegfried's Mechanical Music Museum**, or enjoy a tasting of delicious Rudesheimer coffee. (B,L,D)

Day 7 - June 12 (Wed)– Ludwigshafen

In the city of **Ludwigshafen**, you will have a choice of three excursions: visit **Heidelberg** and explore the **Heidelberg Castle** and **Great Vat**, take a guided trek up the **Philosopher's Path** for panoramic views of the city, or journey to medieval **Speyer**, home to one of the largest Romanesque cathedrals in Europe. (B,L,D)

Day 8 – June 13 (Thurs) – Strasbourg, France

Enjoy a panoramic city tour by bus, a walking tour through the fairytale-esque "**La Petite France**" district, a bike tour that explores Old Town, or view the **Cathedrale de Notre Dame**. (B,L,D)

Day 9 – June 14 (Fri) – Breisach, Germany

Take a day trip walking tour of **Riquewihl**, a medieval city remnant of WWII history and medieval enchantment. For alternative options, you may visit **Freiburg** and explore its history and Gothic cathedral, or join a bike tour through the beautiful **Breisach** countryside. (B,L,D)

Day 10– June 15 (Sat) – Basel, Switzerland

Disembarkation after breakfast. Transfer to airport included. (B)

ADDITIONAL COSTS:

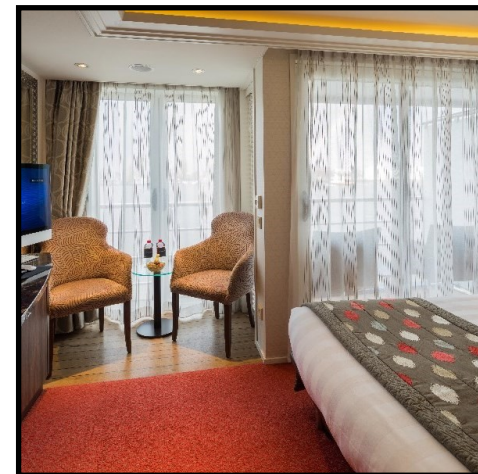
- Trip insurance is highly recommended
- Gratuities
- Add 3.5% if paying by credit card – Visa and Mastercard only



125 Main Street, Cedar Falls, IA 50613
Phone: (319) 277-2202 Fax: (319) 266-0974
www.humbletravel.com
Email: travel@humbletravel.com

4401 Westown Pkwy, Ste. 216, West Des Moines, IA 50266
Phone: (515) 421-4101 Fax: (515) 421-4521
www.humbletravel.com
Email: discover@humbletravel.com

Stateroom Category Spotlight: **French & Outside Balcony**



Amenities:

- In-room temperature control
- Deluxe hotel-style bedding with Egyptian linen, down pillows and duvet
- Spacious bathrooms with multi-jet shower heads
- Large wardrobe, full-length mirror, hair dryer, safe and direct-dial telephone
- Flat-screen TV that also works as a computer
- Entertainment on Demand system providing complimentary TV, movies and music library
- Complimentary internet and Wi-Fi
- Complimentary bottled water replenished daily
- Desk and chair

*Additional stateroom categories available upon request. Please contact for information